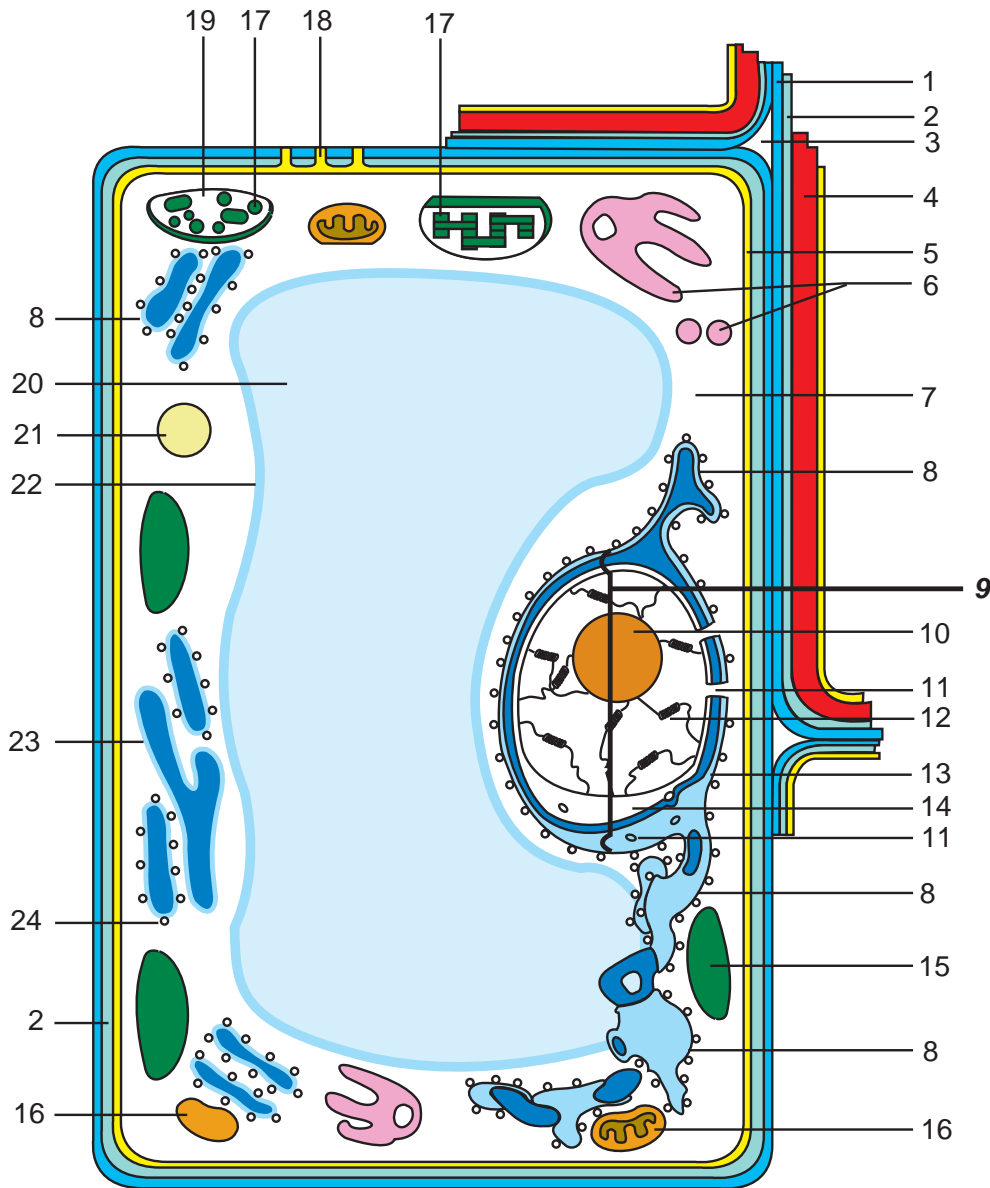




Model is fragile. Handle with care.



- |  |  |                                  |
|--|--|----------------------------------|
| 1. Middle Lamella or Intercellular Layer | 8. Rough Endoplasmic Reticulum         | 16. Mitochondrion                |
| 2. Primary Cell Wall                     | 9. Nucleus                             | 17. Granum                       |
| 3. Intercellular Space                   | 10. Nucleolus                          | 18. Plasmodesmata                |
| 4. Secondary Cell Wall                   | 11. Nuclear Pores                      | 19. Chloroplast Stroma           |
| 5. Plasma Membrane                       | 12. Chromosome                         | 20. Vacuole                      |
| 6. Golgi Body with Vesicles              | 13. Outer Membrane of Nuclear Envelope | 21. Lysosome or Peroxisome       |
| 7. Cytoplasm with Organelles             | 14. Inner Membrane of Nuclear Envelope | 22. Vacuolar Membrane            |
|  | 15. Chloroplast                        | 23. Smooth Endoplasmic Reticulum |
|  |  | 24. Ribosomes                    |